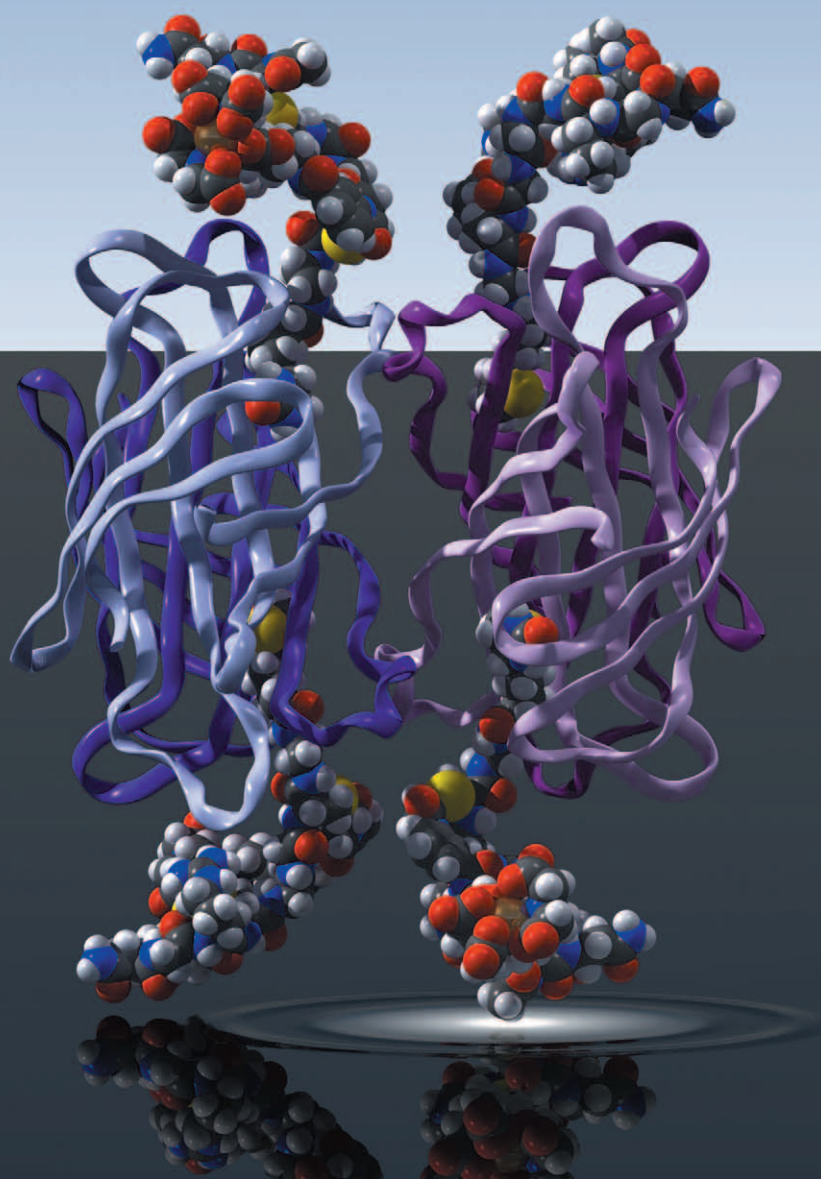


ChemComm

Chemical Communications

www.rsc.org/chemcomm

Number 22 | 14 June 2005 | Pages 2761–2868



ISSN 1359-7345

COMMUNICATION

E. W. Meijer *et al.*

A supramolecular approach to multivalent target-specific MRI contrast agents for angiogenesis

FEATURE ARTICLE

Abraham Joy and Gary B. Schuster

Long-range radical cation migration in DNA: Investigation of the mechanism



1359-7345 (2005) 22;1-D

RSC | Advancing the
Chemical Sciences



A high quality, high impact journal publishing accessible, succinct and reader-friendly reviews in all areas of the chemical sciences.

Now in 12 issues

Impact factor: 9.57

See for yourself - examples of reviews are listed below

For further details and free access to Issue 1, visit

www.rsc.org/csr

Chem Soc Rev Issue 6

Tutorial Reviews:

Chemical genetics to chemical genomics: small molecules offer big insights

David R. Spring

1,3-Dipolar cycloaddition on solid supports: nitrene approach towards isoxazolidines and isoxazolines and subsequent transformations

Karola Rück-Braun, Tonia H. E. Freysoldt and Frank Wierschem

Linear π -conjugated systems derivatized with C_{60} -fullerene as molecular heterojunctions for organic photovoltaics

Jean Roncali

Enantioselective C–C bond synthesis catalysed by enzymes

Joly Sukumaran and Ulf Hanefeld

Axially modified gallium phthalocyanines and naphthalocyanines for optical limiting

Yu Chen, Michael Hanack, Yasuyuki Araki and Osamu Ito

Metallacyclopeptides: Artificial analogues of naturally occurring peptides

Markus Albrecht and Patrick Stortz

Forthcoming Reviews:

Exploring supramolecular interactions and architectures by scanning force microscopies

Paolo Samori

Enantioselective epoxidation of olefins with chiral metalloporphyrin catalysts

Eric Rose, Bruno Andrioletti, Samia Zrig and Mélanie Quelquejeu-Ethève

Stereolabile chiral compounds: analysis by dynamic chromatography and stopped-flow methods

Christian Wolf

Role of sulfur chirality in the chemical processes of biology

Ronald Bentley